

# Colorectal Cancer

A malignant tumour of the colon

# Colorectal Cancer

- Carcinoma is the most common type of malignant tumour affecting the colon
- There is no single cause of colorectal cancer
- Risk factors include:
  - Colorectal Polyps
  - Cancer elsewhere
  - Family History
  - Ulcerative Colitis/Crohns Disease
  - Immunodeficiency Disorders

# Colorectal Cancer

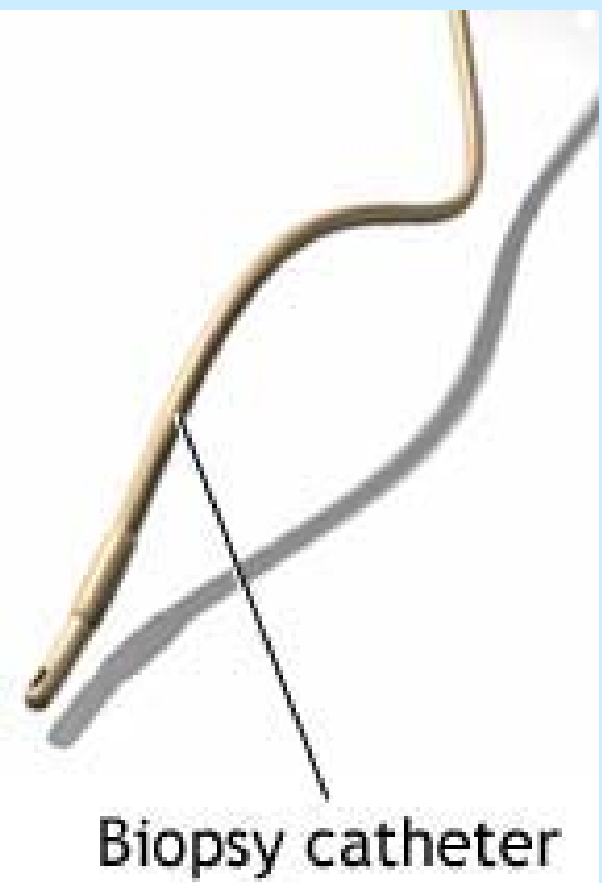
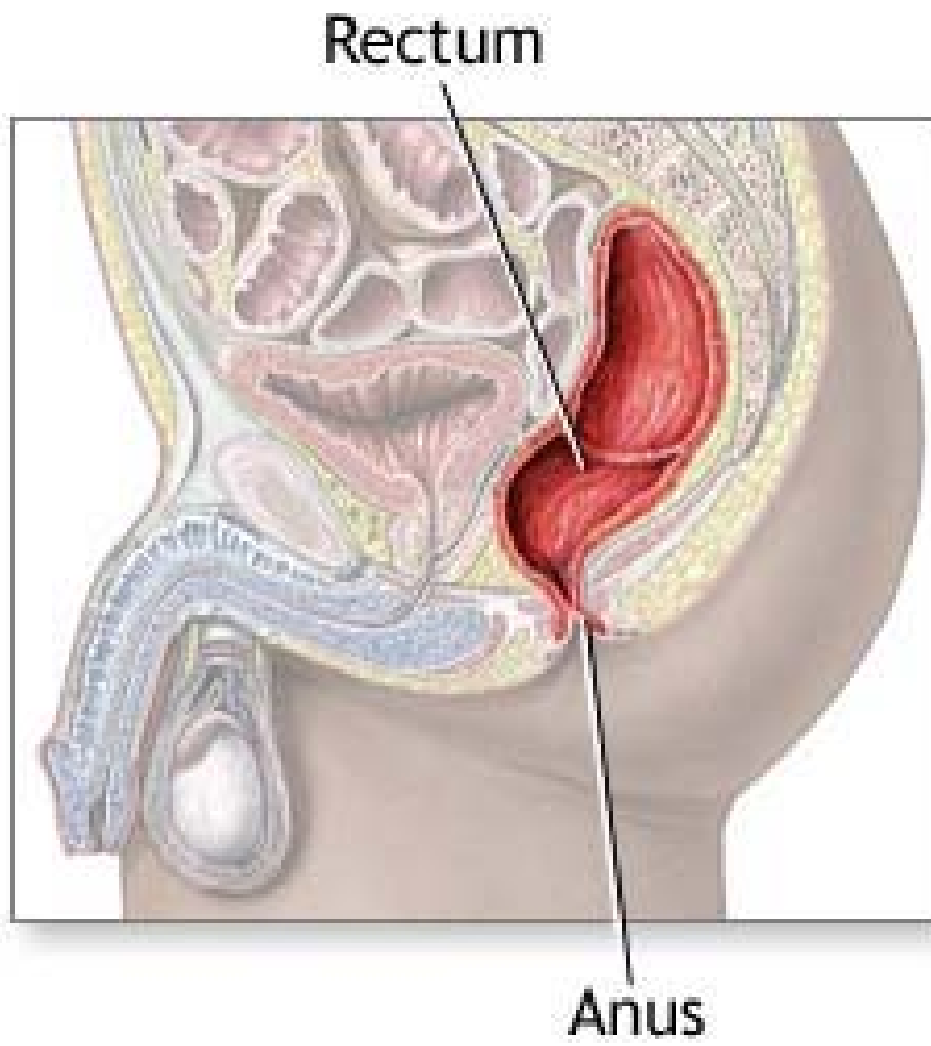
- Dietary factors include high meat, high fat and low fibre diets
- Colorectal cancer accounts for 15% of all cancer deaths
- Incidence 2 in 1,000
- Increased risk with increasing age

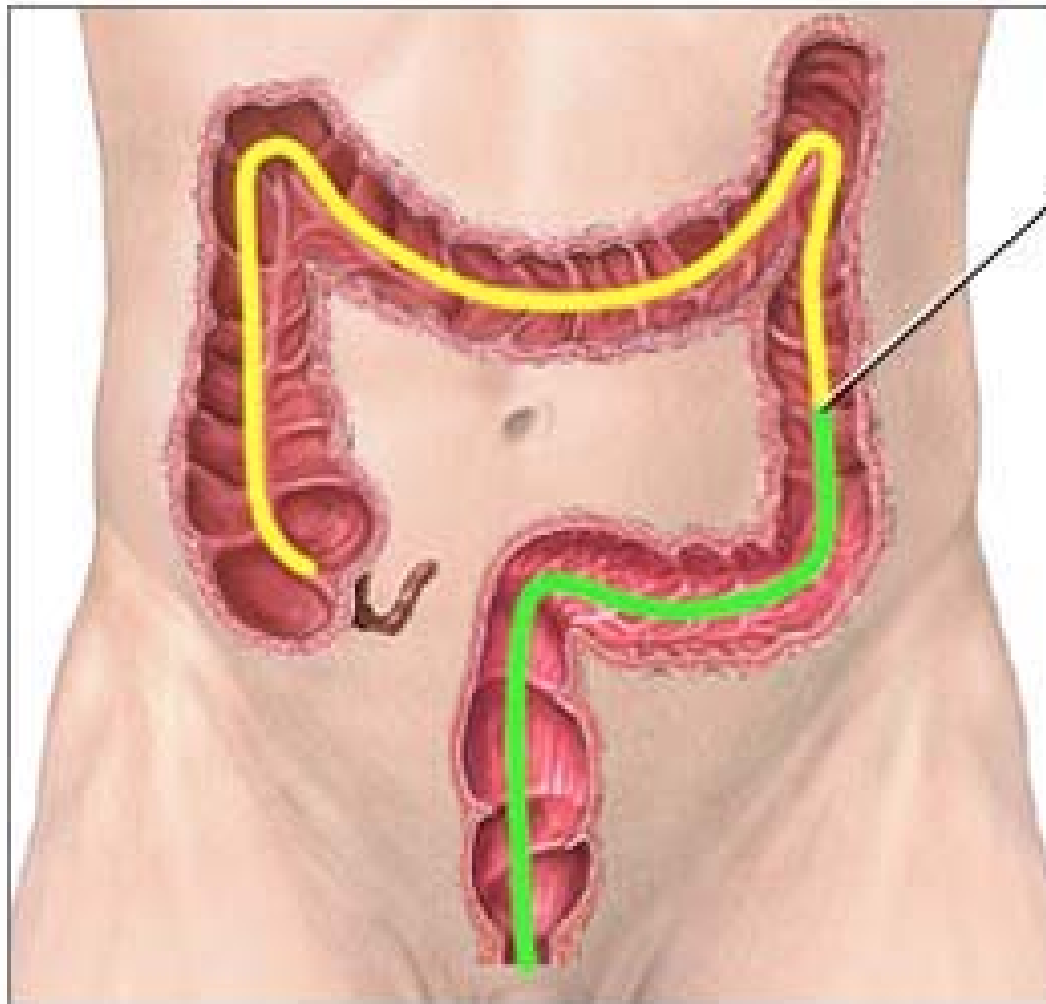
# Symptoms

- Diarrhoea or other change in bowel habit lasting in excess of 10 days
- Alternate diarrhoea & constipation
- Blood in stool
- Anaemia
- Abdominal Pain & Tenderness
- Intestinal Obstruction
- Weight Loss
- Anorexia

# Investigations

- Blood analysis may reveal anaemia and/or elevated ESR
- Stool analysis may reveal the presence of blood
- Barium enema
- Sigmoidoscopy/Colonoscopy
- CAT scan
- Biopsy





End of  
sigmoidoscopy



Colonoscopy examines the entire length of the colon; sigmoidoscopy examines only the lower third

# Staging

- If a malignant tumour is detected, it is staged according to its infiltration and spread.
- It is classified by the Dukes stage of carcinoma

Dukes A – Mucosal Involvement Only

Dukes B – Local Invasion Of Tumour

Dukes C – Spread to Regional Lymph Node

Dukes D - Metastases

# Treatment

- The main part of the treatment is surgical removal of the affected part of the bowel and resection
- These two procedures may not be performed in the one surgical procedure which may require the patient to have a colostomy for a period of time
- If lymph node spread has occurred, then these will also be surgically removed and chemotherapy or radiotherapy used as follow up treatment

# Treatment

- If metastatic spread has occurred, radiotherapy or chemotherapy is indicated
- Dukes A & B have a high cure rate following surgical removal
- Dukes C – 60% will survive 5 years or more
- Dukes D has a variable prognosis dependent upon the location of the metastases
- The overall 5 year survival rate is 50%